



## **EARLY NOTIFICATION**

### **Request for Proposals to Provide National Environmental Policy Act Services**

#### **Humboldt-Toiyabe National Forest**

##### **East Humboldt and Ruby Mountains Fuels Reduction and Landscape Resilience Project**

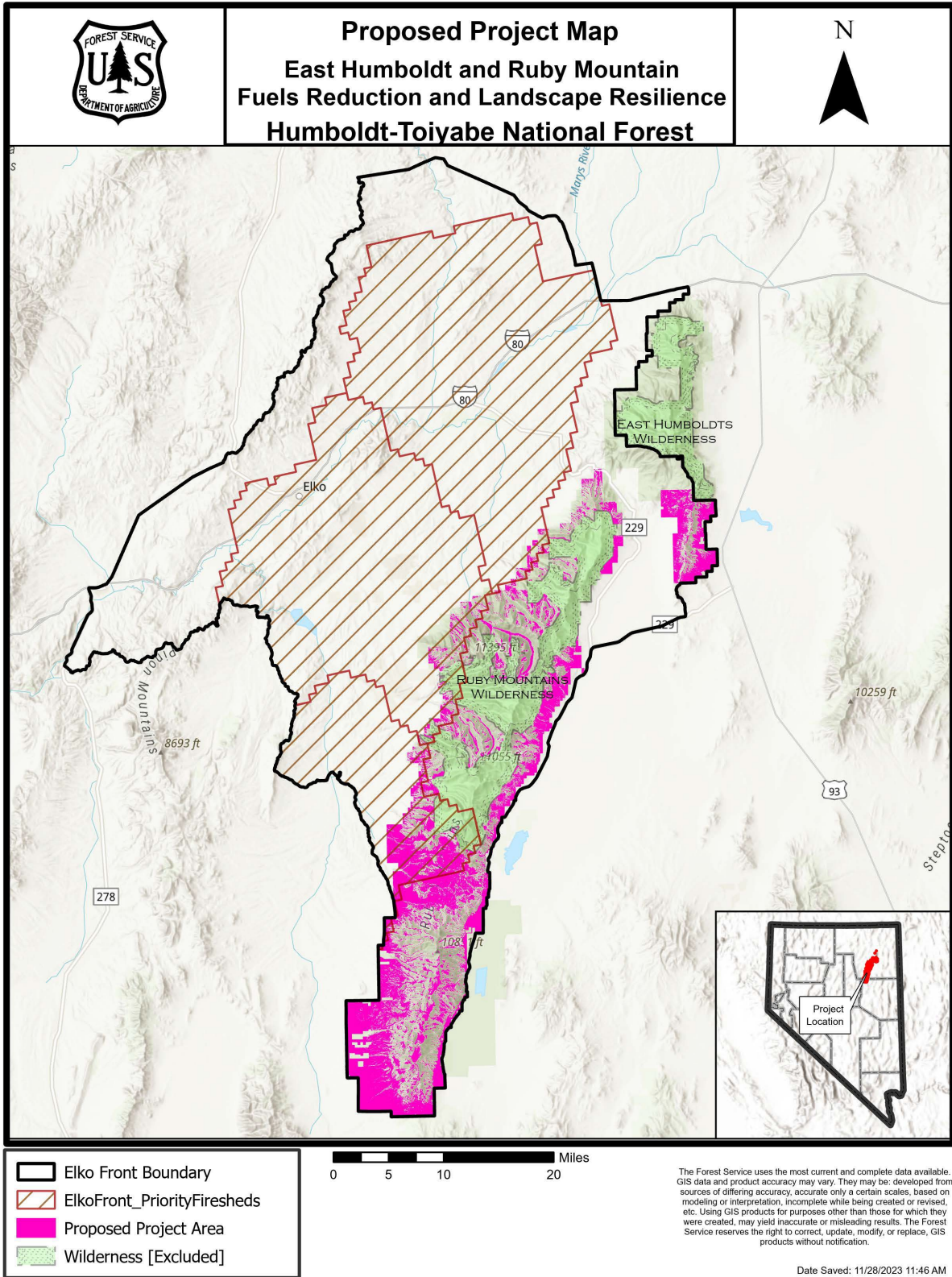
**December 21, 2023**

The Great Basin Institute (GBI) has an agreement with the Humboldt-Toiyabe National Forest (HTNF) to produce the necessary National Environmental Policy Act (NEPA) Environmental Assessment (EA) for the East Humboldt and Ruby Mountains Fuels Reduction and Landscape Resilience Project. The GBI seeks proposals from qualified entities to support this NEPA document.

In 2022 the Forest Service (FS) designated the Elko Front as a Wildfire Crisis Strategy (WCS) Landscape to increase pace and scale for mitigating wildfire risk. Located in northeastern Nevada, the Elko Front includes 20 rural communities at high risk of catastrophic wildfire due to dense fuels, declining forest health, noxious weed infestations, persistent drought, and human-caused ignitions. This project is being planned in the Elko Front WCS Landscape within the HTNF.

The Elko Front WCS Landscape coincides with the Elko-Spring Creek-Lamoille and South Ruby Mountains Shared Stewardship high-priority landscape and the Upper Humboldt/O'Neil Basin Restoration Landscape. This landscape has experienced several recent large fires on National Forest System Lands including the Echo Fire (2018: 6,092 acres), Range 2 Fire (2018: 9,197 acres; see Figure 1), Cherry Fire (2019: 3,494 acres), and Corta Fire (2019: 16,526 acres) highlighting the need for action. The analysis area includes the Beaver (#1371), Elko (#1398), and Dry Creek (#1449) high-risk firesheds which delineate areas of large, forested landscapes and rangelands with great likelihood that an ignition could expose homes, communities, rangelands, and infrastructure to destructive wildfire. The HTNF plans to use strategic vegetation treatments, also known as fuels treatments, to protect these communities and high value resources while improving ecosystem resiliency across this landscape.

The GBI will Post a Request for Proposals (RFP) within 30 days, releasing the announcement on the GBI website (<https://www.thegreatbasininstitute.org/employment/>) and also by direct email announcement through its vendor email list serve. The GBI and the HTNF also will hold a virtual pre-proposal information meeting prior to submission deadline to answer questions regarding the scope of work for this NEPA document.



**Figure 1. Vicinity Map depicting the Elko Front Wildfire Crisis Strategy Landscape boundary and high priority firesheds in relation to the proposed Project Area.**