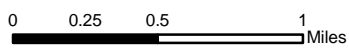
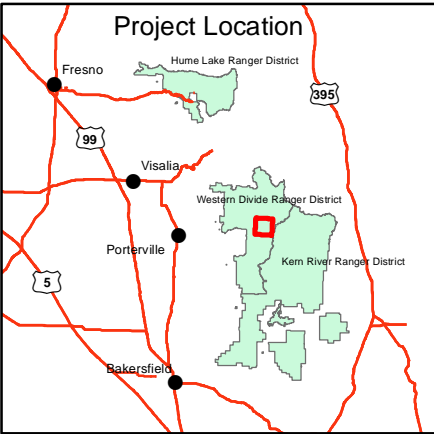


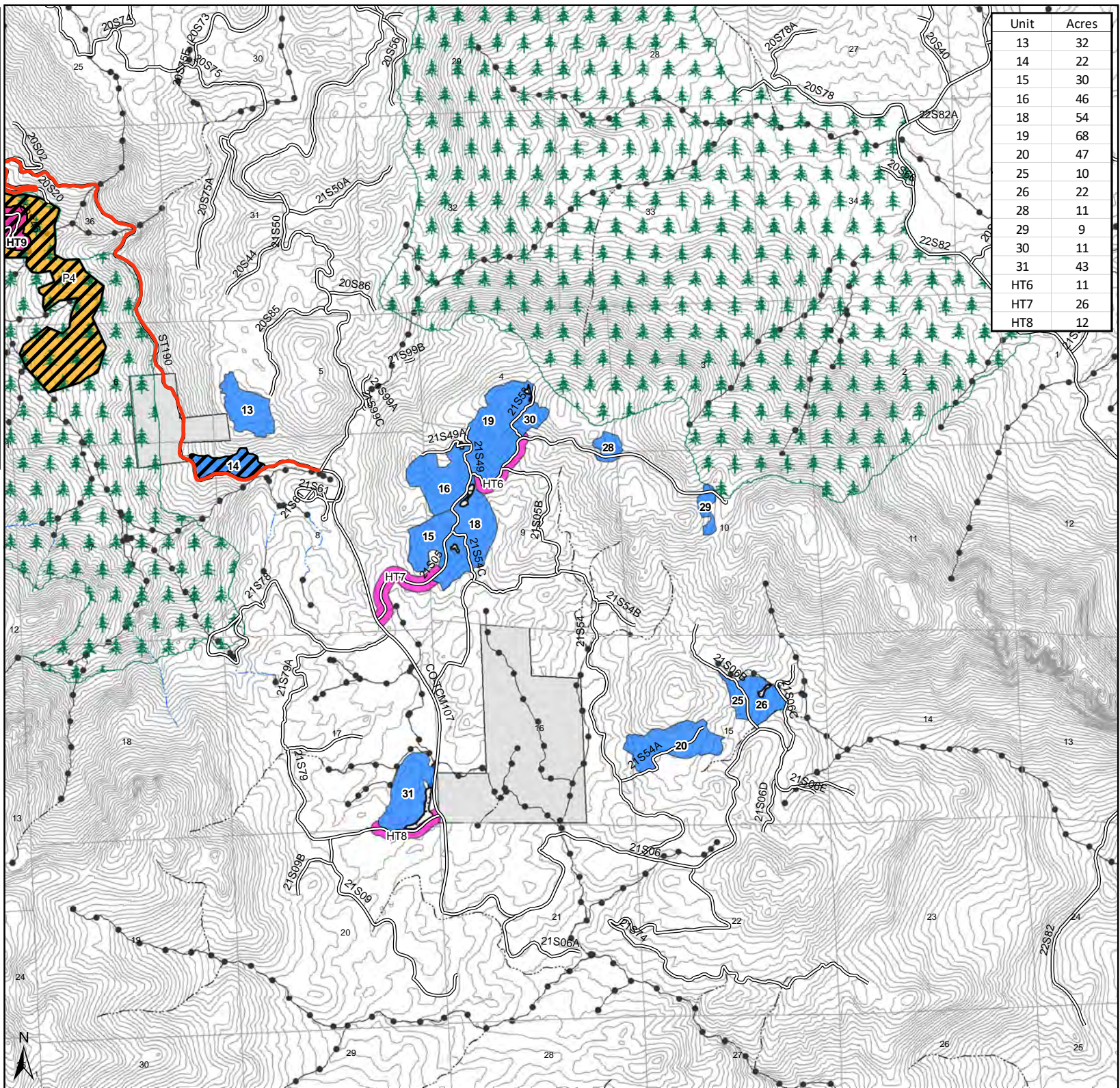
**Castle Fire Biomass Removal  
Sequoia National Forest  
Giant Sequoia National Monument  
Western Divide Ranger District**

- Cutting Unit - Mechanical, A.1
- Cutting Unit - Mechanical, Hazard Trees Only A.2
- Manual Thinning and Piling Unit
- LOP for Terrestrial Wildlife 03/01 - 08/15
- System Roads
- CA 190
- Giant Sequoia Grove
- Protect Meadow - Equipment Exclusion
- Protect Streamcourse - Perennial 100' Equipment Exclusion
- Protect Streamcourse - Intermittent 75' Equipment Exclusion
- Protect Streamcourse - Ephemeral 50' Equipment Exclusion
- Other Ownership

Unit	Acres
13	32
14	22
15	30
16	46
18	54
19	68
20	47
25	10
26	22
28	11
29	9
30	11
31	43
HT6	11
HT7	26
HT8	12



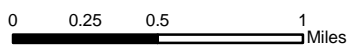
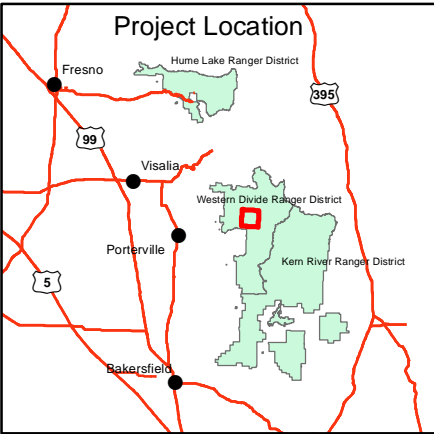
Contours at 200' Intervals



**Castle Fire Biomass Removal  
Sequoia National Forest  
Giant Sequoia National Monument  
Western Divide Ranger District**

- Cutting Unit - Mechanical, A.1
- Cutting Unit - Mechanical, Hazard Trees Only A.2
- Manual Thinning and Piling Unit
- LOP for Terrestrial Wildlife 03/01 - 08/15
- System Roads
- CA 190
- Giant Sequoia Grove
- Protect Meadow - Equipment Exclusion
- Protect Streamcourse - Perennial 100' Equipment Exclusion
- Protect Streamcourse - Intermittent 75' Equipment Exclusion
- Protect Streamcourse - Ephemeral 50' Equipment Exclusion
- Other Ownership

Unit	Acres
1	89
2	47
3	40
4A	15
4B	30
5	61
6	53
8	81
9	22
10	10
11	8
12	29
HT1	8
HT2	7
HT3	44
HT4	10
HT5	32
HT9	70
P1	128
P2	38
P3	25
P4	310



Contours at 200' Intervals

